



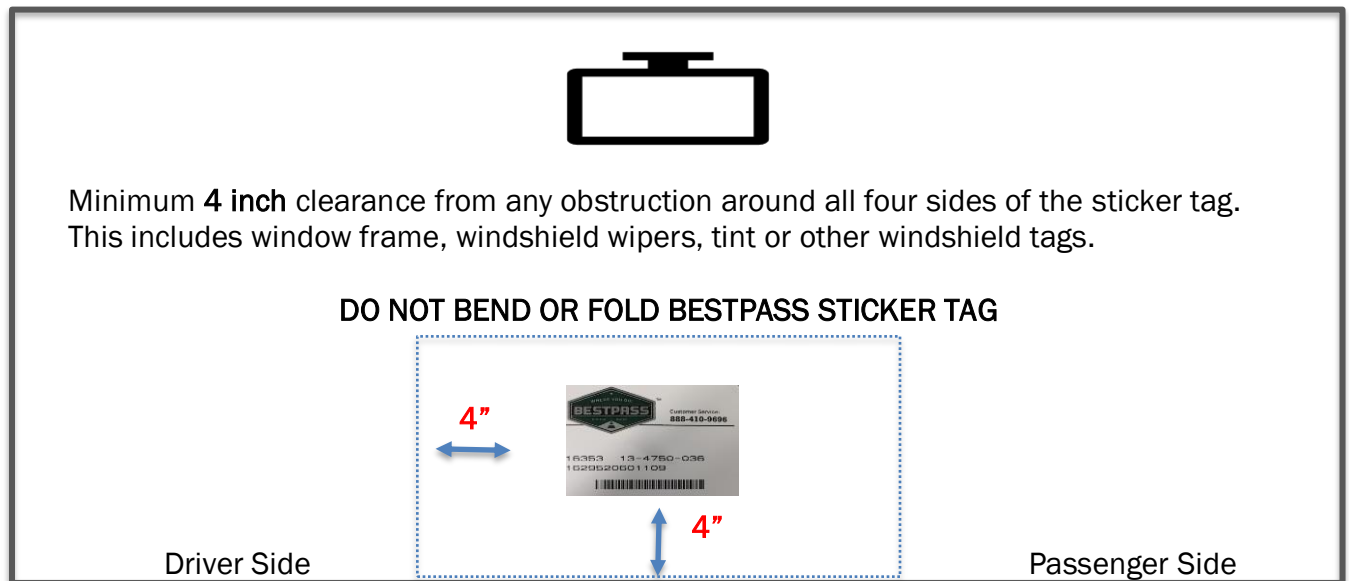
## Instructions for Commercial Vehicle Bestpass Sticker Tags Standard Windshield

### Avoid Misreads & Violations

Mounting your transponder is critical to avoiding misreads and the potential for unwanted violations. Each truck has its nuances, so if you have any questions or have experienced recurring issues going through toll plazas, make sure to call Bestpass customer service support before mounting your transponder.

Bestpass sticker tags are to be mounted to the windshield from the **INSIDE** of the vehicle in the center of the windshield, 4" from the bottom of the windshield. **DO NOT** use additional tape, glue or other adhesives on your sticker tag as it can result in the tag not working properly. The sticker tag numbers should face the driver.

As viewed from the inside of a standard windshield:



Once a sticker tag has been installed it cannot be removed or repositioned. Attempting to do so could result in the Bestpass sticker tag not functioning properly.

For sticker tag deactivation/deletions please email [support@bestpass.com](mailto:support@bestpass.com)

### Still have questions?

Give us a call at 1.888.410.9696 or send an email to [support@bestpass.com](mailto:support@bestpass.com)

For split windshield instructions, flip to reverse side.



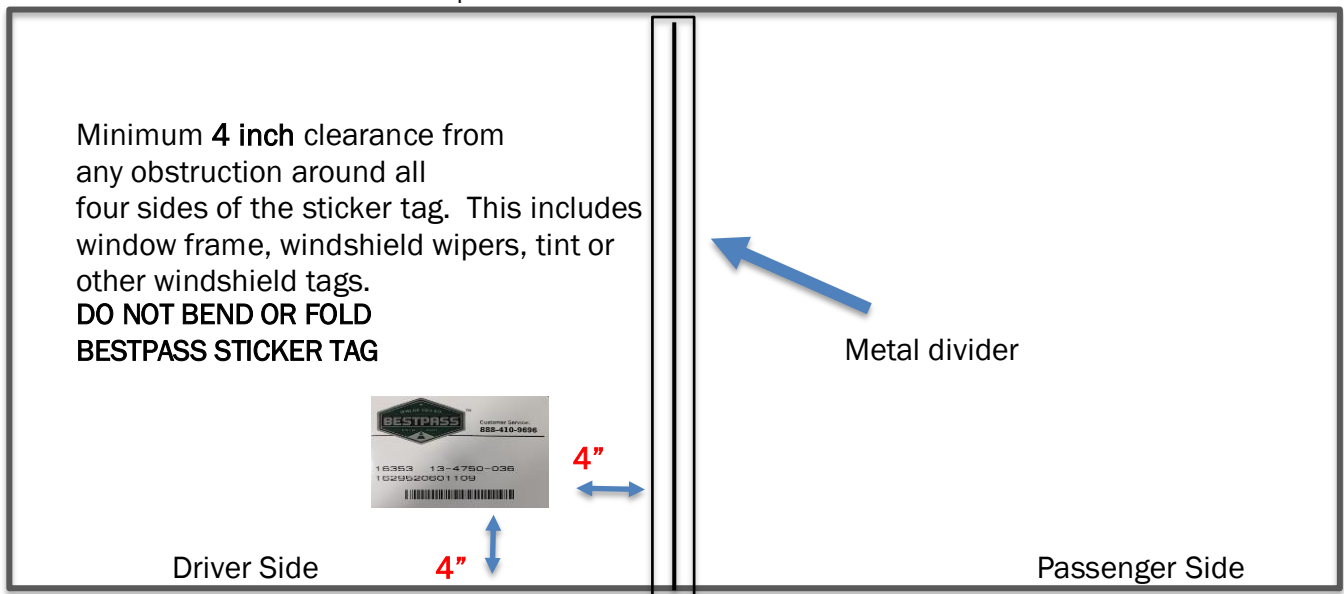
## Instructions for Commercial Vehicle Bestpass Sticker Tags Split Windshield

### Avoid Misreads & Violations

Mounting your transponder is critical to avoiding misreads and the potential for unwanted violations. Each truck has its nuances, so if you have any questions or have experienced recurring issues going through toll plazas, make sure to call Bestpass customer service support before mounting your transponder.

If the vehicle is equipped with a split windshield, the Bestpass sticker tag should be adhered **INSIDE** the windshield, 4 inches from the center metal divider and 4 inches from the bottom in the section on the driver's side. **DO NOT** use additional tape, glue or other adhesives on your sticker tag as it can result in the tag not working properly. The sticker tag numbers should face the driver.

As viewed from the inside of a split windshield:



Once a sticker tag has been installed it cannot be removed or repositioned. Attempting to do so could result in the Bestpass sticker tag not functioning properly.

For sticker tag deactivation/deletions please email [support@bestpass.com](mailto:support@bestpass.com)

### Still have questions?

Give us a call at 1.888.410.9696 or send an email to [support@bestpass.com](mailto:support@bestpass.com)

For standard windshield instructions, flip to reverse side.